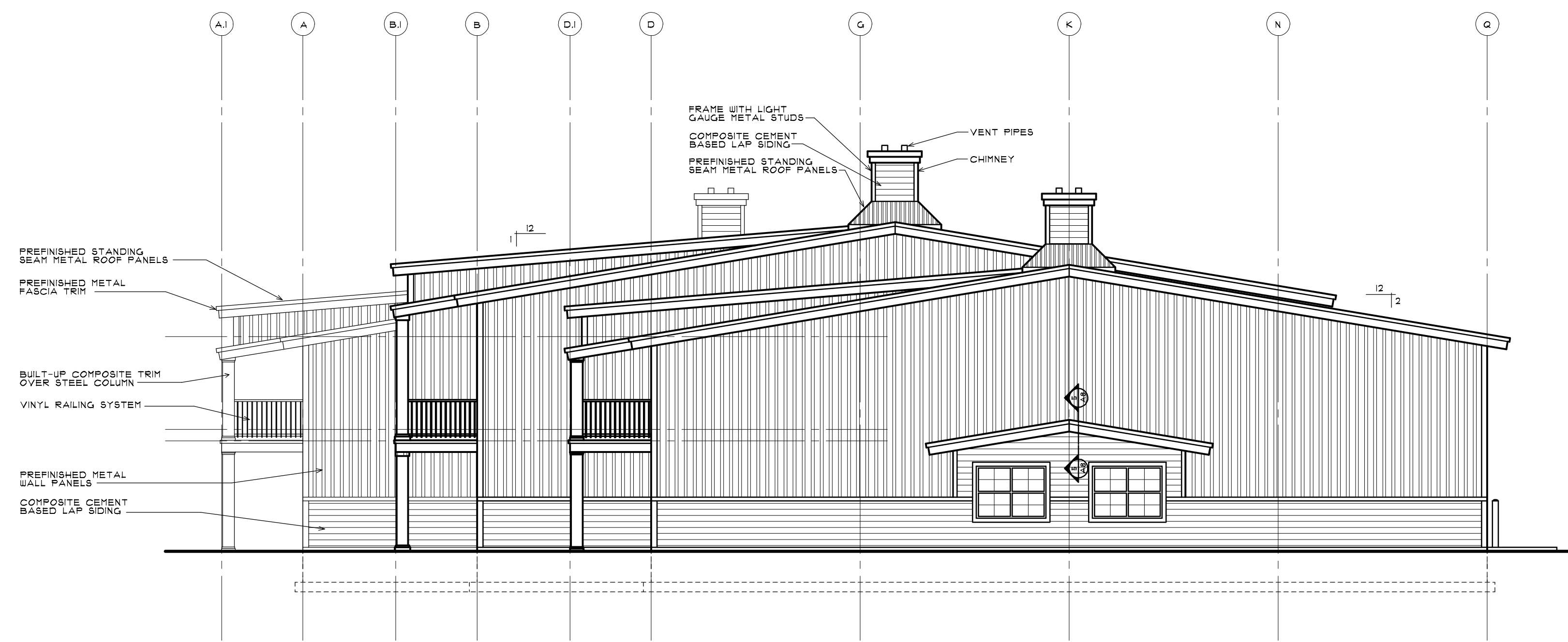


SOUTH ELEVATION

SCALE: 1/8" = 1'-0"



WEST ELEVATION

SCALE: 1/8" = 1'-0"

TODD L. SEDELL ARCHITECT
 COMMERCIAL 14 N COURT AVE SUITE 201
 CALUMET, MICHIGAN 49724
 RESIDENTIAL
 INDUSTRIAL PHONE 6897 791-0932
 FAX 6897 791-0932

ISSUED
 PLANNING AND ZONING REVIEW 2/1/01
 OWNER REVISIONS 4/25/01
 BUILDING PERMIT 1/13/01

PROJECT
KOSS COMMERCIAL-PLEX
 U.S. 31
 CHARLEVOIX, MICHIGAN

PROJECT NUMBER
06-008

SHEET
A5